



**Guangdong Huankai Microbial Sci. & Tech.Co.,Ltd.**

**广东环凯微生物科技有限公司**

Add: No.788,Shenzhen Road,Guangzhou Science City,  
Guangzhou,Guangdong Province,China

Tel: +86-20-32078333-8654 Website: www.hkmbio.com

E-mail: hugochiang@163.com

CRM011 Shigella Chromogenic Medium

(Chromogenic Shigella Agar)

Usages:

For the selective separation and preliminary identification of Shigella.

Principle:

Peptone and yeast extract powder provides carbon and nitrogen sources and trace elements; sodium chloride maintains osmotic equilibrium; agar as medium coagulant; inhibitors inhibit the growth of bacteria; phenol red is a pH indicator, fermentable sugars the bacteria produce acid yellow; mixing pigment corresponding enzyme specific reaction, hydrolysis of the substrate, then release the color group.

Formulation (per liter):

Peptone :9 g

Yeast extract powder:3g

Sodium chloride:5g

Carbohydrate:15g

Agar :15 g

Phenol red: 0.1g

Pigment mixed:2.1g

Inhibitors :2 g

Additive 10 g

Final pH  $6.8 \pm 0.2$

How to use:

- 1.Suspend 51.2 g of medium base, adding 970 mL of distilled or deionized water (increased or reduced according to scaling up), heated to boiling stirring until completely dissolved (avoid excessive heating), without autoclaving, cooled to 50 to 55 about °C spare;
- 2.With 30 mL of distilled or deionized water to dissolve 1 vial of the additive (SR0440), and mix well until the solution became light yellow, using 0.45 μm or 0.22 μm membrane filter sterilized, aseptically added to a cooled to 50°C.
- 3.Taking sample and pre-enrichment of the tested sample in accordance with the appropriate standards (GB, SN, FDA, etc.) , picked a ring of enrichment broth prepared streaked on the medium and incubated at  $36 \pm 1$  °C for 20 ~ 24 h, observations were picked typical or suspicious colonies Shigella single biochemical validation tests.

Quality control:

This product appears orange-red after pouring into plate, the following strains were inoculated after  $36 \pm 1$  °C cultured 20 ~ 24 h growth in the following table.

# Guangdong Huankai Microbial Sci. & Tech.Co.,Ltd.

## 广东环凯微生物科技有限公司

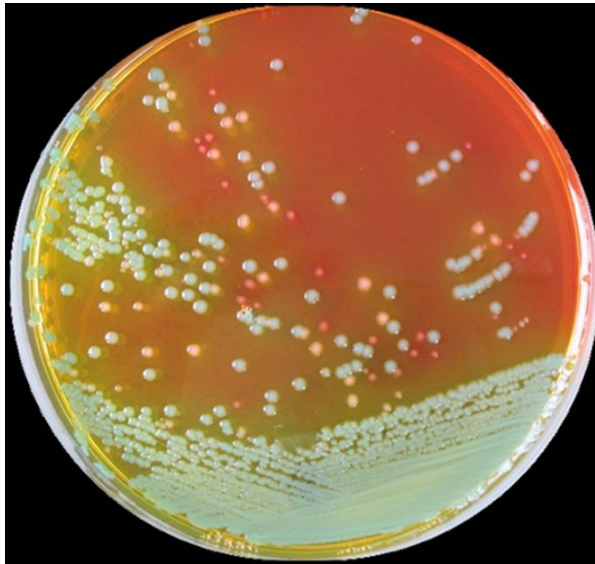
Add: No.788,Shenzhen Road,Guangzhou Science City,  
Guangzhou,Guangdong Province,China

Tel: +86-20-32078333-8654 Website: www.hkmbio.com

E-mail: hugochiang@163.com



| bacteria name         | bacteria No.   | growth situation | feature   |
|-----------------------|----------------|------------------|---|
| Shigella              | CMCC (B) 51572 | grow well        | in white - pink / clear colonies, size at 1 ~ 3 mm, the surrounding medium turns purple |
| Salmonella            | ATCC 14028     | grow well        | yellow colonies, the surrounding medium turns yellow                                    |
| Aerogenes             | ATCC 13048     | grow well        | green colonies,the surrounding medium turns yellow                                      |
| Staphylococcus aureus | ATCC 6538      | suppression      | ---   |



**Shigella :White -slight pink colonies,around medium turn red**

**Others:Yellow or green colonies, around medium turn yellow**

Storage: Keep container tightly closed, store in a cool, dry place, away from bright light.

Specifications: Configurable 1L of Medium .